



50 GREAT STYLES  
76 GREAT COLOURS



2016



## Welcome to the 2016 range of Just Hoods by AWDIs.

We are renowned for our extensive range of hoodies, zoodies, jackets and casual wear for guys, girls and kids which we keep innovating year after year. 2016 is no exception and we have introduced 9 exciting new products taking the total up to 50 great styles. We have even managed to find some new colours to add to our massive colour palette which this year stands at a barely believable 76 great colours.

This year sees a number of firsts for the brand. The JH007 T-Shirt Hoodie (or T'oodie for short!) is our first foray into a T-Shirt fabric style. We have also launched a brand new soft-feel fabric, SupaSoft, which we have incorporated into two new styles; the JH002 SupaSoft Hoodie and the JH002B Baby SupaSoft Hoodie, our first garment targeted at babies.

Our existing styles have also been freshened up with a number of new colours and sizes added in response to market demand but far too many to list here in the introduction!

Thank you for taking the time to pick up and look through our brochure. We hope you enjoy going through the range as much as we have putting it together for you.





# contents

## hoodies

- JH001** COLLEGE HOODIE / 06
- JH001F** GIRLIE COLLEGE HOODIE / 08
- JH002** SUPASOFT HOODIE **NEW** / 10
- JH003** VARSITY HOODIE / 12
- JH004** ELECTRIC HOODIE / 14
- JH005** GIRLIE LONGLINE HOODIE / 16
- JH007** TOODIE **NEW** / 18
- JH008** HEATHER HOODIE / 20
- JH009** BASEBALL HOODIE **NEW** / 22
- JH013** SUPERBRIGHT HOODIE / 24
- JH020** STREET HOODIE / 26
- JH100** CHUNKY HOODIE / 28

## sweats

- JH030** AWDIs SWEAT / 32
- JH033** BASEBALL SWEAT **NEW** / 34
- JH040** HEATHER SWEAT / 36
- JH045** GIRLIE HEATHER SWEAT / 38
- JH046** SOPHOMORE 1/4 ZIP SWEAT / 40
- JH047** FRESHER FULL ZIP SWEAT / 42

## jackets

- JH041** COLLEGE JACKET / 46
- JH043** VARSITY JACKET / 48
- JH044** ELECTRIC VARSITY JACKET / 50
- JH048** UNDERGRAD JACKET **NEW** / 52

## zoodies

- JH050** ZOODIE / 56
- JH051** URBAN VARSITY ZOODIE **NEW** / 58
- JH052** CHUNKY ZOODIE / 60
- JH053** VARSITY ZOODIE / 62
- JH054** FUR LINED CHUNKY ZOODIE / 64
- JH055** GIRLIE ZOODIE / 66
- JH056** GIRLIE CROPPED ZOODIE / 68
- JH057** SLEEVELESS ZOODIE / 70
- JH057F** GIRLIE SLEEVELESS ZOODIE **NEW** / 72
- JH058** HEATHER ZOODIE / 74
- JH059** RETRO ZOODIE / 76

## pants & shorts

- JH070** CAMPUS SWEATPANTS / 80
- JH072** COLLEGE CUFFED JOGPANTS / 81
- JH073** DROPPED CROTCH JOGPANTS **NEW** / 82
- JH075** GIRLIE JOGPANTS / 83
- JH076** GIRLIE CUFFED JOGPANTS / 84
- JH080** CAMPUS SHORTS / 85

## kids

- JH001J** KIDS HOODIE / 88
- JH002B** BABY SUPASOFT HOODIE **NEW** / 90
- JH003J** KIDS VARSITY HOODIE / 92
- JH004J** KIDS ELECTRIC HOODIE / 94
- JH030J** KIDS AWDIs SWEAT / 96
- JH043J** KIDS VARSITY JACKET / 98
- JH050J** KIDS ZOODIE / 100
- JH053J** KIDS VARSITY ZOODIE / 102
- JH058J** KIDS HEATHER ZOODIE / 104
- JH071J** KIDS JOGPANTS / 106
- JH072J** KIDS CUFFED JOGPANTS / 107
- OUR ETHICS** / 108
- INTERNATIONAL SIZE GUIDES** / 109
- COLOUR GUIDE** / 110

JUST HOODS BY  
**AWD**is  
ALL WE DO is

# hoodies













# JH001

college hoodie

AIRFORCE BLUE	ALIEN GREEN	APPLE GREEN	ARCTIC WHITE	ASH
BABY PINK	BOTTLE GREEN	BRICK RED	BURGUNDY	BURNT ORANGE
CANDYFLOSS PINK	CHARCOAL	CORNFLOWER BLUE	CRANBERRY	DEEP SEA BLUE
DENIM BLUE	DESERT SAND	FIRE RED	FOREST GREEN	GOLD
HAWAIIAN BLUE	HEATHER GREY	HOT CHOCOLATE	HOT PINK	JADE
JET BLACK	KELLY GREEN	LAVENDER	LIME GREEN	LIPSTICK PINK
MAGENTA MAGIC	MOONDUST GREY	MOSS GREEN	NEW FRENCH NAVY	OLIVE GREEN
ORANGE CRUSH	OXFORD NAVY	PEPPERMINT	PINKY PURPLE	PLUM
PURPLE	RED HOT CHILLI	ROYAL BLUE	SAPPHIRE BLUE	SHERBET LEMON
SKY BLUE	SPRING GREEN	STEEL GREY	STORM GREY	SUNSET RED
SUN YELLOW	TROPICAL BLUE	TRUE VIOLET	TURQUOISE SURF	
ULTRA VIOLET	VANILLA MILKSHAKE			

## XS-5XL

XS Available in sizes down to XS

3XL Available in sizes up to 3XL

5XL Available in sizes up to 5XL



- ▶ 80% Ringspun Cotton  
20% Polyester
- ▶ 56 great colours
- ▶ Twin needle stitching detailing
- ▶ Double fabric hood
- ▶ Self coloured cords
- ▶ Kangaroo pouch pocket with small hidden opening for ear phone cord feed
- ▶ Ribbed cuffs and hem
- ▶ Soft cotton faced fabric creates ideal printing surface
- ▶ Simple tear out label makes it perfect for rebranding



AVAILABLE IN  
**KIDS SIZES**  
See pg88



AVAILABLE IN  
**WOMEN'S SIZES**  
See pg08

**280GSM**  
MIDWEIGHT  
FABRIC



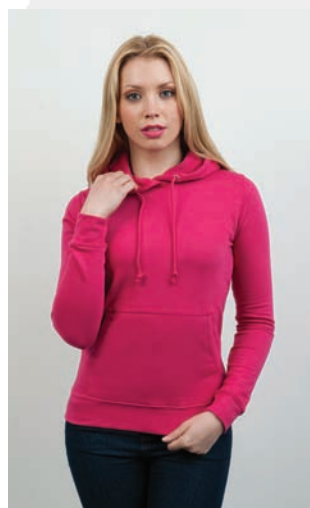


# JH001F

girlie college hoodie

**M**  
**280GSM**  
MIDWEIGHT  
FABRIC

09



- ▶ 80% Ringspun Cotton  
20% Polyester
- ▶ 25 great colours
- ▶ Girlie fit
- ▶ Twin needle stitching detailing
- ▶ Double fabric hood
- ▶ Self coloured cords
- ▶ Kangaroo pouch pocket with small hidden opening for ear phone cord feed
- ▶ Ribbed cuffs and hem
- ▶ Ribbed main pocket edge detail for comfort
- ▶ Soft cotton faced fabric creates ideal printing surface
- ▶ Simple tear out label makes it perfect for rebranding



AVAILABLE IN  
**KIDS SIZES**  
See pg88



AVAILABLE IN  
**MEN'S SIZES**  
See pg06

**XS-XXL**





# JH002

supasoft hoodie

NEW STYLE



- ▶ 80% Ringspun Cotton  
20% Polyester
- ▶ Twin needle stitching  
detailing
- ▶ 3 panel double fabric hood
- ▶ Soft touch hoodie made  
from SupaSoft peached  
finish fabric
- ▶ Self-coloured flat  
drawcords
- ▶ Kangaroo pouch pocket  
with small hidden opening  
for ear phone cord feed
- ▶ Ribbed cuffs and hem
- ▶ Soft feel peached cotton  
faced fabric creates ideal  
printing surface
- ▶ Simple tear out label  
makes it perfect for  
rebranding



XS-XXL

**supasoft**  
PEACHED FINISH FABRIC





# JH003

NEW COLOURS

varsity hoodie

 FIRE RED/ JET BLACK	 FOREST GREEN/ GOLD	 BOTTLE GREEN/ FIRE RED	 CHARCOAL/ JET BLACK
 HEATHER GREY/ FIRE RED	 HAWAIIAN BLUE/ OXFORD NAVY	 ARCTIC WHITE/ HOT PINK	 BURGUNDY/ CHARCOAL
 HEATHER GREY/ FRENCH NAVY	 HOT CHOCOLATE/ VANILLA MILKSHAKE	 ARCTIC WHITE/ FRENCH NAVY	 CANDYFLOSS PINK/ HOT PINK
 HOT PINK/ FRENCH NAVY	 HOT PINK/ HEATHER GREY	 BURGUNDY/ GOLD	 JET BLACK/ SAPPHIRE BLUE
 JET BLACK/ FIRE RED	 JET BLACK/ GOLD	 CHARCOAL/ ORANGE CRUSH	 JET BLACK/ KELLY GREEN
 JET BLACK/ HEATHER GREY	 JET BLACK/ HOT PINK	 FIRE RED/ ARCTIC WHITE	
 JET BLACK/ ORANGE CRUSH	 JET BLACK/ PURPLE	 ROYAL BLUE/ ARCTIC WHITE	
 KELLY GREEN/ ARCTIC WHITE	 KELLY GREEN/ SUN YELLOW	 SAPPHIRE BLUE/ HEATHER GREY	
 LIME GREEN/ MAGENTA MAGIC	 NEW FRENCH NAVY/ FIRE RED	 SAPPHIRE BLUE/ ORANGE CRUSH	
 NEW FRENCH NAVY/ HEATHER GREY	 NEW FRENCH NAVY/ SKY BLUE	 SUN YELLOW/ FIRE RED	
 OXFORD NAVY/ CANDYFLOSS PINK	 OXFORD NAVY/ HAWAIIAN BLUE		
 OXFORD NAVY/ SUN YELLOW	 PURPLE/ HEATHER GREY		
 PURPLE/ SUN YELLOW			
 ROYAL BLUE/ SUN YELLOW			
 SAPPHIRE BLUE/ LIME GREEN			
 SKY BLUE/ ARCTIC WHITE			

XS Available in sizes down to XS

3XL Available in sizes up to 3XL

5XL Available in sizes up to 5XL

- ▶ 80% Ringspun Cotton  
20% Polyester
- ▶ Twin needle stitching  
detailing
- ▶ Double fabric hood with  
contrast inner
- ▶ Contrast flat lace drawcords
- ▶ Kangaroo pouch pocket with  
small opening for ear phone  
cord feed
- ▶ Hidden ear phone loops
- ▶ Ribbed cuffs and hem
- ▶ Soft cotton faced fabric  
creates ideal printing surface
- ▶ Simple tear out label makes  
it perfect for rebranding

**M**  
**280GSM**  
**MIDWEIGHT**  
**FABRIC**



AVAILABLE IN  
KIDS SIZES  
See pg92

**XS-5XL**





# JH004

electric hoodie



AVAILABLE IN  
**KIDS SIZES**  
See pg94



ELECTRIC  
GREEN



ELECTRIC  
ORANGE



ELECTRIC  
PINK



ELECTRIC  
YELLOW



**280GSM**  
MIDWEIGHT  
FABRIC



- 80% Polyester  
20% Ringspun Cotton
- Vibrant eye-catching colours
- Flat lace drawcords
- Twin needle stitching detailing
- Kangaroo pouch pocket with small opening for ear phone cord feed
- Hidden ear phone loops
- Ribbed cuffs and hem
- Simple tear out label makes it perfect for rebranding

**S-XXL**

**ELECTRIC**  
FABRIC





# JH005

girlie longline hoodie

17



- 80% Ringspun Cotton  
20% Polyester
- Girlie fit
- Long length style
- Twin needle stitching detailing
- Three panel double fabric hood
- Flat lace drawcords
- Kangaroo pouch pocket with  
small hidden opening for ear  
phone cord feed
- Hidden ear phone loops
- Long rib cuffs
- Deep rib hem
- Ribbed main pocket edge  
detail for comfort
- Soft cotton faced fabric creates  
ideal printing surface
- Simple tear out label makes it  
perfect for rebranding



**280GSM**  
MIDWEIGHT  
FABRIC



NEW FRENCH  
NAVY



HEATHER  
GREY



HOT PINK



JET BLACK



PURPLE



SAPPHIRE  
BLUE

**XS-XL**





# JH007

toodie

NEW STYLE

19



ARCTIC  
WHITE



CHARCOAL



HEATHER  
GREY



JET BLACK



OXFORD  
NAVY



- ▶ 100% Cotton
- ▶ 60% Cotton/40% Polyester (Charcoal)
- ▶ 93% Cotton/7% Viscose (Heather Grey)
- ▶ T-shirt hoodie style
- ▶ Slim fit
- ▶ Soft feel lightweight fabric
- ▶ Twin needle stitching detailing
- ▶ Flat self-coloured drawcords
- ▶ Hidden ear phone loops
- ▶ Simple tear out label makes it perfect for rebranding

XS-XXL



**180GSM**  
ULTRA  
LIGHTWEIGHT  
FABRIC







# JH008

heather hoodie



**225GSM**  
LIGHTWEIGHT  
FABRIC

21

- 52% Ringspun Cotton  
48% Polyester
- Lightweight hoodie
- Slim fit
- Soft feel lightweight fabric
- Twin needle stitching  
detailing
- Double fabric hood
- Contrast white flat drawcords
- Kangaroo pouch pocket with  
small hidden opening for ear  
phone cord feed
- Hidden ear phone loops
- Ribbed cuffs and hem
- Simple tear out label makes  
it perfect for rebranding



BLACK  
HEATHER



GREY  
HEATHER



NAVY  
HEATHER



PINK  
HEATHER



PURPLE  
HEATHER



RED  
HEATHER



ROYAL  
HEATHER

**S-XXL**





# JH009

baseball hoodie

NEW STYLE

23

- ▶ 80% Ringspun Cotton  
20% Polyester
- ▶ Twin needle stitching  
detailing
- ▶ Contrast raglan sleeves
- ▶ Double fabric hood
- ▶ Contrast flat lace drawcords
- ▶ Kangaroo pouch pocket with  
small opening for ear phone  
cord feed
- ▶ Hidden ear phone loops
- ▶ Ribbed cuffs and hem
- ▶ Soft cotton faced fabric  
creates ideal printing surface
- ▶ Simple tear out label makes  
it perfect for rebranding



BURGUNDY/  
CHARCOAL



CHARCOAL/  
JET BLACK



HEATHER GREY/  
JET BLACK



JET BLACK/  
FIRE RED



OXFORD NAVY/  
BURGUNDY



OXFORD NAVY/  
HEATHER GREY

S-XXL

**M**  
**280GSM**  
MIDWEIGHT  
FABRIC







# JH013

superbright hoodie



25



► 80% Ringspun Cotton / 20% Polyester  
(Body)

80% Polyester / 20% Ringspun Cotton  
(Hood Lining)

- Twin needle stitching detailing
- Double fabric hood with contrast inner  
in electric colours
- Contrast flat lace drawcords
- Kangaroo pouch pocket with small  
opening for ear phone cord feed
- Hidden ear phone loops
- Ribbed cuffs and hem
- Soft cotton faced fabric creates ideal  
printing surface
- Simple tear out label makes it perfect  
for rebranding

**ELECTRIC**  
FABRIC

**M**  
**280GSM**  
MIDWEIGHT  
FABRIC

**S-XXL**







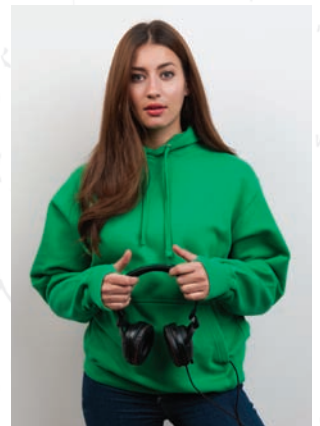
# JH020

## street hoodie

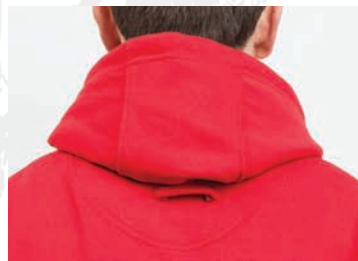


**H**  
330GSM  
HEAVYWEIGHT  
FABRIC

27



- ▶ 80% Ringspun Cotton  
20% Polyester
- ▶ Heavyweight hoodie
- ▶ Twin needle stitching detailing
- ▶ Three panel double fabric hood
- ▶ Thumb holes in the cuffs
- ▶ Flat lace drawcords
- ▶ Kangaroo pouch pocket
- ▶ Hidden MP3/phone pocket  
inside kangaroo pouch pocket  
with small opening for ear  
phone cord feed
- ▶ Hidden ear phone loops
- ▶ V neck insert detail
- ▶ Hanging loop at back neck
- ▶ Locker patch
- ▶ Ribbed cuffs and hem
- ▶ Soft cotton faced fabric creates  
ideal printing surface
- ▶ Simple tear out label makes it  
perfect for rebranding



S-XXL







# JH100

chunky hoodie

29



- ▶ 80% Ringspun Cotton  
20% Polyester
- ▶ Pull over hoodie
- ▶ Side panels for stylish fit
- ▶ Overlock stitching detail throughout
- ▶ Double fabric hood with heather grey waffle fabric inner
- ▶ Chunky white flat lace drawcords
- ▶ Side pockets with small hidden opening for ear phone cord feed
- ▶ Hidden earphone loops
- ▶ Deep ribbed cuffs and hem
- ▶ Soft cotton faced fabric creates ideal printing surface
- ▶ Simple tear out label makes it perfect for rebranding



  
**400GSM**  
SUPER  
HEAVYWEIGHT  
FABRIC



HEATHER  
GREY



JET BLACK



OXFORD  
NAVY



PURPLE



RED HOT  
CHILLI

**XS-XXL**

JUST HOODS BY  
**AWDis**  
ALL WE DO is

# sweats



AWDis SWEAT



BASEBALL SWEAT **NEW**



HEATHER SWEAT



GIRLIE HEATHER SWEAT



SOPHOMORE 1/4 ZIP SWEAT



FRESHER FULL ZIP SWEAT











# JH030

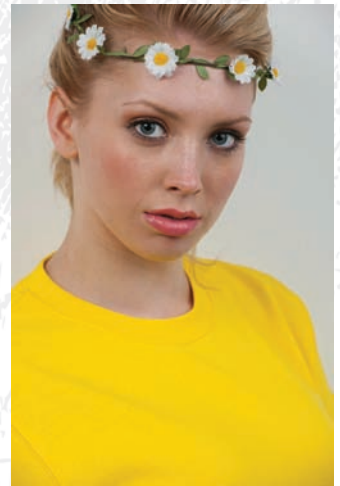
AWDis sweat



3XL Available in sizes up to 3XL

- ▶ 80% Ringspun Cotton  
20% Polyester
- ▶ 37 great colours
- ▶ Crew neck sweat
- ▶ Set in sleeves
- ▶ Taped neck
- ▶ Stylish fit
- ▶ Twin needle stitching  
detailing
- ▶ Ribbed collar, cuffs and hem
- ▶ Soft cotton faced fabric  
creates ideal printing  
surface
- ▶ Simple tear out label makes  
it perfect for rebranding

  
**M**  
**280GSM**  
MIDWEIGHT  
FABRIC



**XS-3XL**

 AVAILABLE IN  
**KIDS SIZES**  
See pg96





# JH033

NEW STYLE

baseball sweat



OXFORD NAVY/  
BURGUNDY



CHARCOAL/  
JET BLACK



JET BLACK/  
FIRE RED



BURGUNDY/  
CHARCOAL



OXFORD NAVY/  
HEATHER GREY



HEATHER GREY/  
JET BLACK



35

- ▶ 80% Ringspun Cotton  
20% Polyester
- ▶ Twin needle stitching  
detailing
- ▶ Ribbed crew neck
- ▶ Retro stylish fit
- ▶ Contrast raglan sleeves
- ▶ Ribbed cuffs and hem
- ▶ Soft cotton faced fabric  
creates ideal printing  
surface
- ▶ Simple tear out label makes  
it perfect for rebranding



**280GSM**  
MIDWEIGHT  
FABRIC

S-XXL





# JH040

heather sweat



**225GSM**  
LIGHTWEIGHT  
FABRIC

- ▶ 52% Ringspun Cotton  
48% Polyester
- ▶ Lightweight crew neck sweat
- ▶ Slim fit
- ▶ Soft feel lightweight fabric
- ▶ Set in sleeves
- ▶ Ribbed collar, cuffs and hem
- ▶ Taped neck
- ▶ Stitched V detail at neck
- ▶ Simple tear out label makes it perfect for rebranding



BLACK  
HEATHER



GREY  
HEATHER



NAVY  
HEATHER



PINK  
HEATHER



PURPLE  
HEATHER



RED  
HEATHER



ROYAL  
HEATHER

37



AVAILABLE IN  
**WOMEN'S SIZES**  
See pg38

**S-XXL**







# JH045

girlie heather sweat



BLACK  
HEATHER



GREY  
HEATHER



NAVY  
HEATHER



PINK  
HEATHER



PURPLE  
HEATHER



RED  
HEATHER



ROYAL  
HEATHER



**225GSM**  
LIGHTWEIGHT  
FABRIC



39

- ▶ 52% Ringspun Cotton  
48% Polyester
- ▶ Lightweight crew neck sweat
- ▶ Girlie fit
- ▶ Soft feel lightweight fabric
- ▶ Set in sleeves
- ▶ Ribbed collar, cuffs and hem
- ▶ Taped neck
- ▶ Simple tear out label makes  
it perfect for rebranding



AVAILABLE IN  
**MEN'S SIZES**  
See pg36

**XS-XL**





# JH046

sophomore 1/4 zip sweat



ARCTIC  
WHITE



BURGUNDY



CHARCOAL



JET BLACK



KELLY  
GREEN



NEW FRENCH  
NAVY



FIRE RED



HEATHER  
GREY



HOT PINK



PURPLE



ROYAL  
BLUE



SAPPHIRE  
BLUE



**280GSM**  
MIDWEIGHT  
FABRIC



41

**S-XXL**

- ▶ 80% Ringspun Cotton  
20% Polyester
- ▶ 1/4 zip neck
- ▶ Metal YKK zipper and puller
- ▶ Ribbed cuffs and hem
- ▶ Hidden ear phone loops
- ▶ Soft cotton faced fabric  
creates ideal printing surface
- ▶ Simple tear out label makes  
it perfect for rebranding





# JH047

fresher full zip sweat



- 80% Ringspun Cotton  
20% Polyester
- Full covered zip
- Front pockets
- Metal YKK zipper and puller
- Ribbed cuffs and hem
- Hidden ear phone loops
- Soft cotton faced fabric  
creates ideal printing surface
- Simple tear out label makes  
it perfect for rebranding



**M**  
**280GSM**  
MIDWEIGHT  
FABRIC



**S-XXL**

JUST HOODS BY  
**AWDiS**  
ALL WE DO is

# jackets



COLLEGE JACKET

VARSITY JACKET

ELECTRIC VARSITY JACKET

UNDERGRAD JACKET **NEW**











# JH041

college jacket

- ▶ 80% Ringspun Cotton  
20% Polyester
- ▶ Knitted collar, cuffs and  
waistband with stripe details
- ▶ Press – stud closure
- ▶ Welt pockets
- ▶ Hanging loop at back neck
- ▶ Pocket with small opening  
for ear phone cord feed
- ▶ Hidden ear phone loops
- ▶ Taped back neck
- ▶ White coloured studs
- ▶ Soft cotton faced fabric  
creates ideal printing  
surface
- ▶ Simple tear out label makes  
it perfect for rebranding



47



HEATHER GREY



JET BLACK



FIRE RED



OXFORD NAVY



ROYAL BLUE



**280GSM**  
MIDWEIGHT  
FABRIC

**XS-XXL**





# JH043

varsity jacket

  
BURGUNDY/  
HEATHER GREY

  
FIRE RED/  
WHITE

  
HEATHER GREY/  
WHITE

  
HOT PINK/  
WHITE

  
JET BLACK/  
FIRE RED

  
JET BLACK/  
HEATHER GREY

  
JET BLACK/  
SUN YELLOW

  
JET BLACK/  
WHITE

  
KELLY GREEN/  
WHITE

  
OXFORD NAVY/  
BURGUNDY

  
OXFORD NAVY/  
HEATHER GREY

  
OXFORD NAVY/  
WHITE

  
PURPLE/  
WHITE

  
PURPLE/  
HEATHER GREY

  
ROYAL BLUE/  
WHITE

  
SAPPHIRE BLUE/  
HEATHER GREY



- ▶ 80% Ringspun Cotton  
20% Polyester
- ▶ Contrast sleeves
- ▶ Knitted collar, cuffs and waistband with stripe details
- ▶ Press – stud closure
- ▶ Contrast studs
- ▶ Welt contrast pockets
- ▶ Taped back neck
- ▶ Hanging loop at back neck
- ▶ Pocket with small opening for ear phone cord feed
- ▶ Hidden ear phone loops
- ▶ Soft cotton faced fabric creates ideal printing surface
- ▶ Simple tear out label makes it perfect for rebranding



AVAILABLE IN  
**KIDS SIZES**  
See pg98



**XS-XXL**

  
**330GSM**  
HEAVYWEIGHT  
FABRIC





# JHO44

electric varsity jacket

- ▶ 80% Ringspun Cotton  
20% Polyester (Body)
- 80% Polyester  
20% Ringspun Cotton (Sleeves)
- ▶ Contrast electric colour sleeves
- ▶ Knitted collar, cuffs and waistband with stripe details
- ▶ Press – stud closure
- ▶ Contrast electric colour studs
- ▶ Welt contrast pockets
- ▶ Taped back neck
- ▶ Hanging loop at back neck
- ▶ Pocket with small opening for ear phone cord feed
- ▶ Hidden ear phone loops
- ▶ Soft cotton faced fabric creates ideal printing surface
- ▶ Simple tear out label makes it perfect for rebranding



  
**330GSM**  
HEAVYWEIGHT  
FABRIC  
(BODY)



JET BLACK/  
ELECTRIC GREEN



JET BLACK/  
ELECTRIC ORANGE



JET BLACK/  
ELECTRIC PINK



JET BLACK/  
ELECTRIC YELLOW

**ELECTRIC**  
FABRIC

**XS-XXL**





# JH048

NEW STYLE

undergrad jacket



53



▶ 80% Ringspun Cotton  
20% Polyester

▶ Set in sleeves

▶ Knitted collar, cuffs and waistband

▶ Contrast plastic zipper and puller

▶ Side pockets

▶ Side panels for stylish fit

▶ Pocket with small opening for ear  
phone cord feed

▶ Hidden ear phone loops

▶ Soft cotton faced fabric creates ideal  
printing surface

▶ Simple tear out label makes it perfect  
for rebranding



**280GSM**  
MIDWEIGHT  
FABRIC

**S-XXL**

JUST HOODS BY  
**AWD**is  
ALL WE DO is

# zoodies



ZOODIE



URBAN VARSITY ZOODIE **NEW**



CHUNKY ZOODIE



VARSITY ZOODIE



FUR LINED CHUNKY ZOODIE



GIRLIE ZOODIE



GIRLIE CROPPED ZOODIE



SLEEVELESS ZOODIE



GIRLIE SLEEVELESS ZOODIE **NEW**



HEATHER ZOODIE



RETRO ZOODIE











# JH050

zoodie



5XL Available in sizes up to 5XL

- ▶ 80% Ringspun Cotton  
20% Polyester
- ▶ Full zip hoodie
- ▶ Covered main zip with self fabric
- ▶ Twin needle stitching detailing
- ▶ Double fabric hood
- ▶ Self coloured cords
- ▶ Kangaroo pouch pockets
- ▶ Right hand side pocket has small hidden opening for ear phone cord feed
- ▶ Hidden ear phone loops
- ▶ Ribbed cuffs and hem
- ▶ Self coloured twill tape puller
- ▶ Soft cotton faced fabric creates ideal printing surface
- ▶ Simple tear out label makes it perfect for rebranding



AVAILABLE IN  
**KIDS SIZES**  
See pg100



AVAILABLE IN  
**WOMEN'S SIZES**  
See pg66

**S-5XL**







# JH051

NEW STYLE

urban varsity zoodie



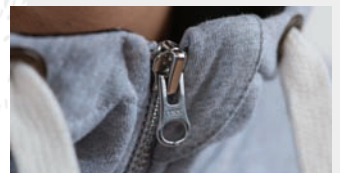
JET BLACK/  
FIRE RED



HEATHER GREY/  
JET BLACK



OXFORD NAVY/  
HEATHER GREY



- 80% Ringspun Cotton  
20% Polyester
- 3 panel fabric hood with  
contrast single jersey fabric  
inner
- Contrast sleeves
- Knitted cuffs and waistband  
with stripe details
- Metal YKK zipper and puller  
with chin protector
- Kangaroo pouch pockets
- Chunky cream flat lace  
drawcords
- Right hand side pocket has  
small hidden opening for  
earphone cord feed
- Hidden earphone loops
- Soft cotton faced fabric  
creates ideal printing surface
- Simple tear out label makes it  
perfect for rebranding



**330GSM**  
HEAVYWEIGHT  
FABRIC

**S-XXL**







# JH052

chunky zoodie

- ▶ 80% Ringspun Cotton  
20% Polyester
- ▶ Full zip hoodie
- ▶ Side panels for stylish fit
- ▶ Brass zip covered with  
chunky rib detail
- ▶ Overlock stitching detail  
throughout
- ▶ Double fabric hood with  
heather grey waffle fabric  
inner
- ▶ Chunky white flat lace  
drawcords
- ▶ Kangaroo pouch pockets
- ▶ Right hand side pocket has  
small hidden opening for  
earphone cord feed
- ▶ Hidden earphone loops
- ▶ Deep ribbed cuffs and hem
- ▶ Soft cotton faced fabric  
creates ideal printing  
surface
- ▶ Simple tear out label  
makes it perfect for  
rebranding



61



S-XXL







# JH053

varsity zoodie



FIRE RED/  
JET BLACK



JET BLACK/  
FIRE RED



JET BLACK/  
ORANGE CRUSH



KELLY GREEN/  
ARCTIC WHITE



NEW FRENCH NAVY/  
FIRE RED



PURPLE/  
SUN YELLOW



HEATHER GREY/  
FRENCH NAVY



JET BLACK/  
GOLD



JET BLACK/  
HEATHER GREY



NEW FRENCH NAVY/  
HEATHER GREY



NEW FRENCH NAVY/  
SKY BLUE



SAPPHIRE BLUE/  
HEATHER GREY



- 80% Ringspun Cotton  
20% Polyester
- Full zip hoodie with contrast plastic zip
- Twin needle stitching detailing
- Double fabric hood with contrast inner
- Contrast flat lace drawcords
- Kangaroo pouch pockets
- Right hand side pocket has small hidden opening for earphone cord feed
- Hidden ear phone loops
- Ribbed cuffs and hem
- Soft cotton faced fabric creates ideal printing surface
- Simple tear out label makes it perfect for rebranding

63



AVAILABLE IN  
**KIDS SIZES**  
See pg102



**280GSM**  
MIDWEIGHT  
FABRIC

**S-XXL**





# JH054

fur lined chunky zoodie



- 80% Ringspun Cotton  
20% Polyester
- Full zip hoodie
- Side panels for stylish fit
- Brass zip covered with chunky rib detail
- Overlock stitching detail throughout
- Double fabric hood with charcoal grey fur fabric inner
- Chunky white flat lace drawcords
- Kangaroo pouch pockets
- Right hand side pocket has small hidden opening for earphone cord feed
- Hidden earphone loops
- Deep ribbed cuffs and hem
- Soft cotton faced fabric creates ideal printing surface
- Simple tear out label makes it perfect for rebranding

65



**S**  
**400GSM**  
SUPER  
HEAVYWEIGHT  
FABRIC

HEATHER  
GREY

JET BLACK

NEW FRENCH  
NAVY

**S-XXL**





# JH055

girlie zoodie



AVAILABLE IN  
**MEN'S SIZES**  
See pg56



AVAILABLE IN  
**KIDS SIZES**  
See pg100



ARCTIC  
WHITE



BABY PINK



CANDYFLOSS  
PINK



HOT PINK



JET BLACK



KELLY  
GREEN



FIRE RED



HAWAIIAN  
BLUE



HEATHER  
GREY



NEW FRENCH  
NAVY



PURPLE



SAPPHIRE  
BLUE



**280GSM**  
MIDWEIGHT  
FABRIC



- ▶ 80% Ringspun Cotton  
20% Polyester
- ▶ Full zip hoodie
- ▶ Girlie fit
- ▶ Covered main plastic zip  
with self fabric
- ▶ Twin needle stitching  
detailing
- ▶ Double fabric hood
- ▶ Self coloured cords
- ▶ Kangaroo pouch pockets
- ▶ Right hand side pocket has  
small hidden opening for  
ear phone cord feed
- ▶ Hidden ear phone loops
- ▶ Ribbed cuffs and hem
- ▶ Deep hem
- ▶ Ribbed main pocket edge  
detail for comfort
- ▶ Self coloured twill tape  
puller
- ▶ Soft cotton faced fabric  
creates ideal printing  
surface
- ▶ Simple tear out label  
makes it perfect for  
rebranding

67

**XS-XL**





# JH056

girlie cropped zoodie



- ▶ 80% Ringspun Cotton  
20% Polyester
- ▶ Zipped cropped hoodie with metal YKK zip
- ▶ Girlie fit
- ▶ Twin needle stitching detailing
- ▶ Double fabric hood
- ▶ Contrast white drawcords
- ▶ Kangaroo pouch pockets
- ▶ Right hand side pocket has small hidden opening for ear phone cord feed
- ▶ Hidden ear phone loops
- ▶ Ribbed cuffs and hem
- ▶ Soft cotton faced fabric creates ideal printing surface
- ▶ Simple tear out label makes it perfect for rebranding



XXS-L





# JH057

NEW COLOURS

sleeveless zoodie

**M**  
**280GSM**  
MIDWEIGHT  
FABRIC

**NEW**  
CHARCOAL

HEATHER  
GREY

JET BLACK

**NEW**  
OXFORD  
NAVY



- 80% Ringspun Cotton  
20% Polyester
- Sleeveless zipped hoodie with YKK metal zip
- Twin needle stitching detailing
- Double fabric hood
- Contrast flat white drawcords
- Hanging loop at back neck
- Kangaroo pouch pockets
- Right hand side pocket has small hidden opening for earphone cord feed
- Hidden ear phone loops
- Ribbed cuffs and hem
- Soft cotton faced fabric creates ideal printing surface
- Simple tear out label makes it perfect for rebranding

71



AVAILABLE IN  
**WOMEN'S SIZES**  
See pg72

**S-XXL**





# JH057F

NEW STYLE

girlie sleeveless zoodie



- ▶ 80% Ringspun Cotton  
20% Polyester
- ▶ Sleeveless zipped hoodie  
with metal YKK zip
- ▶ Twin needle stitching  
detailing
- ▶ Double fabric hood
- ▶ Self-coloured drawcords  
with metallic detail
- ▶ Kangaroo pouch pockets
- ▶ Right hand side pocket has  
small hidden opening for  
earphone cord feed
- ▶ Hidden ear phone loops
- ▶ Ribbed cuffs and hem
- ▶ Ribbed main pocket edge  
detail for comfort
- ▶ Soft cotton faced fabric  
creates ideal printing  
surface
- ▶ Simple tear out label  
makes it perfect for  
rebranding

**XXS-XL**



AVAILABLE IN  
**MEN'S SIZES**  
See pg70



**280GSM**  
MIDWEIGHT  
FABRIC





# JH058

heather zoodie



- 52% Ringspun Cotton  
48% Polyester
- Lightweight full zip hoodie with metal zip
- Slim fit
- Soft feel lightweight fabric
- Twin needle stitching detailing
- Double fabric hood
- Contrast white drawcords
- Kangaroo pouch pockets
- Right hand side pocket has small hidden opening for earphone cord feed
- Hidden ear phone loops
- Ribbed cuffs and hem
- Simple tear out label makes it perfect for rebranding

75



BLACK  
HEATHER



GREY  
HEATHER



NAVY  
HEATHER



PINK  
HEATHER



PURPLE  
HEATHER



RED  
HEATHER



ROYAL  
HEATHER

  
**225GSM**  
LIGHTWEIGHT  
FABRIC



AVAILABLE IN  
**KIDS SIZES**  
See pg104

**XS-XXL**





# JH059

retro zoodie



CHARCOAL GREY/  
JET BLACK



CHARCOAL GREY/  
BURGUNDY



CHARCOAL GREY/  
BOTTLE GREEN



CHARCOAL GREY/  
OXFORD NAVY

- ▶ 80% Ringspun Cotton  
20% Polyester
- ▶ Full zip hoodie with metal  
YKK zip
- ▶ Slim fit
- ▶ Contrast sleeves and hood
- ▶ Twin needle stitching  
detailing
- ▶ Double fabric hood
- ▶ Contrast flat white drawcords
- ▶ Kangaroo pouch pockets
- ▶ Right hand side pocket has  
small hidden opening for  
earphone cord feed
- ▶ Hidden ear phone loops
- ▶ Ribbed cuffs and hem
- ▶ Soft cotton faced fabric  
creates ideal printing surface
- ▶ Simple tear out label makes  
it perfect for rebranding



**280GSM**  
MIDWEIGHT  
FABRIC

**XS-XXL**



JUST HOODS BY  
**AWDiS**  
ALL WE DO is

# pants & shorts



CAMPUS SWEATPANTS



COLLEGE CUFFED JOGPANTS



DROPPED CROTCH JOGPANTS **NEW**



GIRLIE JOGPANTS



GIRLIE CUFFED JOGPANTS



CAMPUS SHORTS







# JHO70

campus sweatpants



**330GSM**  
HEAVYWEIGHT  
FABRIC

- ▶ 80% Ringspun Cotton  
20% Polyester
- ▶ Heavyweight sweatpant
- ▶ Side pockets
- ▶ Single back patch pocket
- ▶ Deep rib waistband with  
drawcords
- ▶ Open hem leg
- ▶ Soft cotton faced fabric  
creates ideal printing  
surface
- ▶ Simple tear out label  
makes it perfect for  
rebranding



S-XL



JET BLACK



HEATHER  
GREY



NEW FRENCH  
NAVY



# JH072

NEW COLOUR

college cuffed jogpants



- ▶ 80% Ringspun Cotton  
20% Polyester
- ▶ Cuffed leg opening
- ▶ Elasticated waist with white inner drawcords
- ▶ Side pockets
- ▶ Soft cotton faced fabric creates ideal printing surface
- ▶ Simple tear out label makes it perfect for rebranding



**280GSM**  
MIDWEIGHT  
FABRIC



81



HEATHER  
GREY



NEW FRENCH  
NAVY



JET BLACK



CHARCOAL



AVAILABLE IN  
**KIDS SIZES**  
See pg107



AVAILABLE IN  
**WOMEN'S SIZES**  
See pg84

**S-XL**

NEW STYLE

# JH073

dropped crotch jogpants



- ▶ 80% Ringspun Cotton  
20% Polyester
- ▶ Drop crotch style jogpants
- ▶ Slim fit
- ▶ Ribbed cuffs
- ▶ Front pockets with YKK zips
- ▶ Elasticated waistband with inner drawcords
- ▶ Simple tear out label makes it perfect for rebranding
- ▶ Soft cotton faced fabric creates ideal printing surface



HEATHER  
GREY



JET BLACK



NEW FRENCH  
NAVY

S-XL



# JH075

## girlie jogpants

- ▶ 80% Ringspun Cotton  
20% Polyester
- ▶ Girlie fit jogpant
- ▶ Open hem leg
- ▶ 1x1 rib waistband with front drawcords
- ▶ Soft cotton faced fabric creates ideal printing surface
- ▶ Simple tear out label makes it perfect for rebranding



ARCTIC  
WHITE



HEATHER  
GREY



JET BLACK



PURPLE



HOT PINK



NEW FRENCH  
NAVY



SAPPHIRE  
BLUE



83

XS-L



AVAILABLE IN  
**KIDS SIZES**  
See pg106



**280GSM**  
MIDWEIGHT  
FABRIC

# JH076

girlie cuffed jogpants



NEW FRENCH  
NAVY



HEATHER  
GREY



JET BLACK

- ▶ 80% Ringspun Cotton  
20% Polyester
- ▶ Girlie fit jogpant
- ▶ Cuffed leg opening
- ▶ 1x1 rib waistband with front  
cream drawcords
- ▶ Soft cotton faced fabric  
creates ideal printing  
surface
- ▶ Simple tear out label  
makes it perfect for  
rebranding



**280GSM**  
MIDWEIGHT  
FABRIC

**XS-L**



AVAILABLE IN  
**KIDS SIZES**  
See pg107



AVAILABLE IN  
**MEN'S SIZES**  
See pg81



# JH080

NEW COLOURS

campus shorts

- ▶ 80% Ringspun Cotton  
20% Polyester
- ▶ Heavyweight short
- ▶ Side pockets
- ▶ Single back patch pocket
- ▶ Deep rib waistband with flat cream drawcords
- ▶ Soft cotton faced fabric creates ideal printing surface
- ▶ Simple tear out label makes it perfect for rebranding



**H**  
**330GSM**  
HEAVYWEIGHT  
FABRIC



85



JET BLACK



NEW  
FRENCH  
NAVY



HEATHER  
GREY



NEW  
CHARCOAL



NEW  
BURGUNDY

S-XXL

JUST HOODS BY  
**AWDis**  
ALL WE DO is

# kids



KIDS HOODIE



BABY SUPASOFT HOODIE **NEW**



KIDS VARSITY HOODIE



KIDS ELECTRIC HOODIE



KIDS AWDIs SWEAT



KIDS VARSITY JACKET



KIDS ZOODIE



KIDS VARSITY ZOODIE



KIDS HEATHER ZOODIE



KIDS JOGPANTS



KIDS CUFFED JOGPANTS





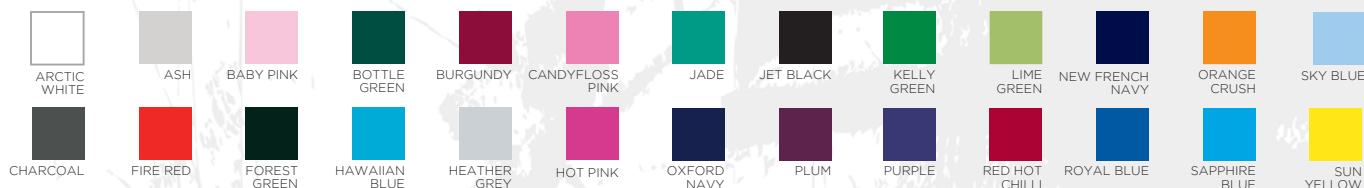






# JH001J

kids hoodie



- ▶ 80% Ringspun Cotton  
20% Polyester
- ▶ Twin needle stitching  
detailing
- ▶ Double fabric hood
- ▶ No drawcords – to comply  
with EU regulation
- ▶ Kangaroo pouch pocket  
with small hidden opening  
for ear phone cord feed
- ▶ Ribbed cuffs and hem
- ▶ Soft cotton faced fabric  
creates ideal printing  
surface
- ▶ Simple tear out label  
makes it perfect for  
rebranding

**XXS-XL**







# JH002B

NEW STYLE

baby supasoft hoodie



**280GSM**  
MIDWEIGHT  
FABRIC



- ▶ 80% Ringspun Cotton  
20% Polyester
- ▶ Twin needle stitching  
detailing
- ▶ Double fabric hood
- ▶ No drawcords – to comply  
with EU regulation
- ▶ Soft touch hoodie made  
from SupaSoft peached  
finish fabric.
- ▶ Taped back neck
- ▶ Front open placket at neck  
for easy dressing
- ▶ Ribbed cuffs and hem
- ▶ Soft feel peached cotton  
faced fabric creates ideal  
printing surface
- ▶ Simple tear out label  
makes it perfect for  
rebranding

91

SUPA BLACK SUPA GREY SUPA HOT PINK SUPA NAVY SUPA ROYAL



6/9 months  
9/12 months

**supasoft**  
PEACHED FINISH FABRIC







# JH003J

NEW COLOUR

kids varsity hoodie

**M**  
280GSM  
MIDWEIGHT  
FABRIC



- ▶ 80% Ringspun Cotton  
20% Polyester
- ▶ Twin needle stitching  
detailing
- ▶ Double fabric hood with  
contrast inner
- ▶ No drawcords – to comply  
with EU regulation
- ▶ Kangaroo pouch pocket  
with small opening for ear  
phone cord feed
- ▶ Hidden ear phone loops
- ▶ Ribbed cuffs and hem
- ▶ Soft cotton faced fabric  
creates ideal printing  
surface
- ▶ Simple tear out label  
makes it perfect for  
rebranding



93

AVAILABLE IN  
**ADULT SIZES**  
See pg12

**XS-XL**





# JH004J

kids electric hoodie



ELECTRIC  
GREEN



ELECTRIC  
ORANGE



ELECTRIC  
PINK



ELECTRIC  
YELLOW

- ▶ 80% Polyester  
20% Ringspun Cotton
- ▶ Vibrant eye-catching colours
- ▶ No drawcords – to comply with EU regulation
- ▶ Twin needle stitching detailing
- ▶ Kangaroo pouch pocket with small opening for ear phone cord feed
- ▶ Hidden ear phone loops
- ▶ Ribbed cuffs and hem
- ▶ Simple tear out label makes it perfect for rebranding

95



AVAILABLE IN  
**ADULT SIZES**  
See pg15

**ELECTRIC**  
FABRIC

**XS-XL**

**M**  
**280GSM**  
MIDWEIGHT  
FABRIC





# JH030J

kids AWDIs sweat

**M**  
280GSM  
MIDWEIGHT  
FABRIC



ARCTIC WHITE	ASH	BOTTLE GREEN	BURGUNDY	CHARCOAL	FIRE RED
FOREST GREEN	HEATHER GREY	HOT PINK	JADE	JET BLACK	KELLY GREEN
LIME GREEN	NEW FRENCH NAVY	ORANGE CRUSH	OXFORD NAVY	PLUM	PURPLE
RED HOT CHILLI	ROYAL BLUE	SAPPHIRE BLUE	SKY BLUE	STORM GREY	SUN YELLOW



- ▶ 80% Ringspun Cotton  
20% Polyester
- ▶ 24 great colours
- ▶ Crew neck sweat
- ▶ Set in sleeves
- ▶ Taped neck
- ▶ Stylish fit
- ▶ Soft cotton faced fabric creates ideal printing surface
- ▶ Twin needle stitching detailing
- ▶ Ribbed collar, cuffs and hem
- ▶ Simple tear out label makes it perfect for rebranding

97

**XS-XL**



AVAILABLE IN  
**ADULT SIZES**  
See pg32





# JH043J

kids varsity jacket

OXFORD NAVY/  
WHITE

BURGUNDY/  
HEATHER GREY

PURPLE/  
HEATHER GREY

FIRE RED/  
WHITE

PURPLE/  
WHITE

HEATHER GREY/  
WHITE

ROYAL BLUE/  
WHITE

HOT PINK/  
WHITE

SAPPHIRE BLUE/  
HEATHER GREY

JET BLACK/  
FIRE RED

JET BLACK/  
HEATHER GREY

JET BLACK/  
SUN YELLOW

JET BLACK/  
WHITE

KELLY GREEN/  
WHITE

OXFORD NAVY/  
BURGUNDY

OXFORD NAVY/  
HEATHER GREY



- ▶ 80% Ringspun Cotton  
20% Polyester
- ▶ Contrast sleeves
- ▶ Knitted collar, cuffs and waistband with stripe details
- ▶ Press – stud closure
- ▶ Contrast studs
- ▶ Welt contrast pockets
- ▶ Taped back neck
- ▶ Hanging loop at back neck
- ▶ Pocket with small opening for ear phone cord feed
- ▶ Hidden ear phone loops
- ▶ Soft cotton faced fabric creates ideal printing surface
- ▶ Simple tear out label makes it perfect for rebranding



AVAILABLE IN  
**ADULT SIZES**  
See pg48

**H**  
**330GSM**  
HEAVYWEIGHT  
FABRIC

**XS-XL**





# JH050J

NEW SIZE - XS

kids zoodie



ARCTIC WHITE



FIRE RED



HAWAIIAN BLUE



HEATHER GREY



HOT PINK



JET BLACK



KELLY GREEN



NEW FRENCH NAVY



OXFORD NAVY



PURPLE



SAPPHIRE BLUE



- ▶ 80% Ringspun Cotton  
20% Polyester
- ▶ Full zip hoodie
- ▶ Covered main zip with self fabric
- ▶ Twin needle stitching detailing
- ▶ Double fabric hood
- ▶ Kangaroo pouch pockets
- ▶ Right hand side pocket has small hidden opening for ear phone cord feed
- ▶ Ribbed cuffs and hem
- ▶ No drawcords – to comply with EU regulation
- ▶ Self coloured twill tape puller
- ▶ Soft cotton faced fabric creates ideal printing surface
- ▶ Simple tear out label makes it perfect for rebranding



101



AVAILABLE IN  
**WOMEN'S SIZES**  
See pg66



AVAILABLE IN  
**MEN'S SIZES**  
See pg56

**XS-XL**





# JH053J

kids varsity zoodie



- ▶ 80% Ringspun Cotton  
20% Polyester
- ▶ Full zip hoodie with contrast plastic zip
- ▶ Twin needle stitching detailing
- ▶ Double fabric hood with contrast inner
- ▶ Kangaroo pouch pockets
- ▶ Right hand side pocket has small hidden opening for earphone cord feed
- ▶ Hidden ear phone loops
- ▶ Ribbed cuffs and hem
- ▶ No drawcords – to comply with EU regulation
- ▶ Soft cotton faced fabric creates ideal printing surface
- ▶ Simple tear out label makes it perfect for rebranding



AVAILABLE IN  
**ADULT SIZES**  
See pg62



JET BLACK/  
FIRE RED



HEATHER GREY/  
FRENCH NAVY



NEW FRENCH NAVY/  
HEATHER GREY



PURPLE/  
SUN YELLOW



SAPPHIRE BLUE/  
HEATHER GREY



NEW FRENCH NAVY/  
FIRE RED



103

**S-XL**



**280GSM**  
MIDWEIGHT  
FABRIC







# JH058J

kids heather zoodie

- ▶ 52% Ringspun Cotton  
48% Polyester
- ▶ Lightweight full zip hoodie  
with metal zip
- ▶ Modern fit
- ▶ Soft feel lightweight fabric
- ▶ Twin needle stitching  
detailing
- ▶ Double fabric hood
- ▶ Kangaroo pouch pockets
- ▶ Right hand side pocket has  
small hidden opening for  
earphone cord feed
- ▶ Hidden ear phone loops
- ▶ No drawcords – to comply  
with EU regulation
- ▶ Ribbed cuffs and hem
- ▶ Simple tear out label  
makes it perfect for  
rebranding



105



PURPLE  
HEATHER



RED  
HEATHER



ROYAL  
HEATHER



BLACK  
HEATHER



GREY  
HEATHER



NAVY  
HEATHER



PINK  
HEATHER



**225GSM**  
LIGHTWEIGHT  
FABRIC

**S-XL**



AVAILABLE IN  
**ADULT SIZES**  
See pg74

# JHO71J

kids jogpants



**280GSM**  
MIDWEIGHT  
FABRIC



ARCTIC  
WHITE



FIRE RED



HEATHER  
GREY



HOT PINK



JET BLACK



NEW FRENCH  
NAVY



PURPLE



SAPPHIRE  
BLUE

- ▶ 80% Ringspun Cotton  
20% Polyester
- ▶ Side pockets
- ▶ Single back patch pocket
- ▶ Open hem leg
- ▶ 1x1 rib waistband
- ▶ No drawcords - to comply  
with EU regulation
- ▶ Soft cotton faced fabric  
creates ideal printing  
surface
- ▶ Simple tear out label  
makes it perfect for  
rebranding



**S-XL**



AVAILABLE IN  
**WOMEN'S SIZES**  
See pg83



# JH072J

kids cuffed jogpants



- 80% Ringspun Cotton  
20% Polyester
- Side pockets
- Cuffed leg opening
- 1x1 rib waistband
- No drawcords - to comply  
with EU regulation
- Soft cotton faced fabric  
creates ideal printing  
surface
- Simple tear out label  
makes it perfect for  
rebranding

  
**280GSM**  
MIDWEIGHT  
FABRIC

107

  
NEW FRENCH  
NAVY

  
HEATHER  
GREY

  
JET BLACK



AVAILABLE IN  
**WOMEN'S SIZES**  
See pg84



AVAILABLE IN  
**MEN'S SIZES**  
See pg81

**S-XL**

JUST HOODS BY  
**AWDis**  
ALL WE DO is



# our ethics

We're passionate about doing things the right way at AWDis, which is why we use WRAP (Worldwide Responsible Accredited Production) certified factories.

WRAP's "12 Principles" are based on accepted international workplace standards and regulations which encompass human resources management, health and safety, environmental practices, legal compliance including import/export and customs conformity, security standards and local laws.

WRAP has grown to become a global leader in social compliance. Its comprehensive inspection and certification process has made it the world's largest independent social compliance certification program for the apparel/textile industry.

We and our global partners have a shared commitment to fair and safe working practices throughout our supply chain. We recognize our responsibility to ensure the manufacturing methods used match the ideals of those that wear and love our products.







# international size guides

## MEN'S

SIZE	UK	FR	DE	NL	ES	IT	USA
XS	XS	40	32	32	40	44	34
S	S	42	33	33	42	46	36
M	M	44	34	34	44	48	38
L	L	46	36	36	46	50	40
XL	XL	48	38	38	48	52	42
2XL	2XL	50	40	40	50	54	44
3XL	3XL	52	42	42	52	56	46
4XL	4XL	54	44	44	54	58	48
5XL	5XL	56	46	46	56	60	50

## LADIES

SIZE	UK	FR	DE	NL	ES	IT	USA
XXS	6	34	32	32	34	38	2
XS	8	36	34	34	36	40	4
S	10	38	36	36	38	42	6
M	12	40	38	38	40	44	8
L	14	42	40	40	42	46	10
XL	16	44	42	42	44	48	12
2XL	18	46	44	44	46	50	14

## KIDS

SIZE	AGE	HEIGHT
Baby	6/9 months	68-74cm
Baby	9/12 months	74-80cm
XXS	1/2 years	80-92cm
XS	3/4 years	98-104cm
S	5/6 years	110-116cm
M	7/8 years	122-128cm
L	9/11 years	134-146cm
XL	12/13 years	152-158cm

JH001	COLLEGE HOODIE
JH001F	GIRLIE COLLEGE HOODIE
JH001J	KIDS HOODIE
JH005	GIRLIE LONGLINE HOODIE
NEW JH007	TOODIE
JH020	STREET HOODIE
JH030	AWDis SWEAT
JH030J	KIDS AWDIs SWEAT
JH046	SOPHOMORE 1/4 ZIP SWEAT
JH047	FRESHER FULL ZIP SWEAT
JH050	ZOODIE
JH050J	KIDS ZOODIE
JH052	CHUNKY ZOODIE
JH054	FUR LINED CHUNKY ZOODIE
JH055	GIRLIE ZOODIE
JH056	GIRLIE CROPPED ZOODIE
JH057	SLEEVELESS ZOODIE
NEW JH057F	GIRLIE SLEEVELESS ZOODIE
JH070	CAMPUS SWEATPANTS
JH071J	KIDS JOGPANTS
JH072	COLLEGE CUFFED JOGPANTS
JH072J	KIDS CUFFED JOGPANTS
NEW JH073	DROPPED CROTCH JOGPANTS
JH075	GIRLIE JOGPANTS
JH076	GIRLIE CUFFED JOGPANTS
JH080	CAMPUS SHORTS
JH100	CHUNKY HOODIE





# additional colour guides



## electric colour guide



**JH004**  
ELECTRIC HOODIE

**JH004J**  
KIDS ELECTRIC HOODIE




## heather colour guide



**JH008**  
HEATHER HOODIE

**JH040**  
HEATHER SWEAT

**JH045**  
GIRLIE HEATHER SWEAT

**JH058**  
HEATHER ZOODIE

**JH058J**  
KIDS HEATHER ZOODIE




## supasoft colour guide



**NEW JH002**  
SUPASOFT HOODIE

**NEW JH002B**  
BABY SUPASOFT HOODIE






# pms colour guide

**note:** all colours have nearest pantone ref listed - actual shades may vary.



PMS 5935C

NEW FRENCH NAVY



PMS 2767C

OXFORD NAVY



PMS 2685C

ULTRA VIOLET



PMS 268C

PURPLE



PMS 3025C

DEEP SEA BLUE



PMS 653C

DENIM BLUE



PMS 802C

ELECTRIC GREEN



PMS 2736C

ROYAL BLUE



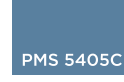
PMS 271C

TRUE VIOLET



PMS 285C

TROPICAL BLUE



PMS 5405C

AIRFORCE BLUE



PMS 645C

CORNFLOWER BLUE



PMS 300C

SAPPHIRE BLUE



PMS 806C

ELECTRIC PINK



PMS 567C

BOTTLE GREEN



PMS 5535C

FOREST GREEN



PMS 448C

OLIVE GREEN



PMS 561C

MOSS GREEN



PMS 347C

KELLY GREEN



PMS 339C

SPRING GREEN



PMS 809C

ELECTRIC YELLOW



PMS 2995C

HAWAIIAN BLUE



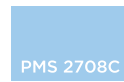
PMS 3115C

TURQUOISE SURF



PMS 2567C

LAVENDER



PMS 2708C

SKY BLUE



PMS 571C

PEPPERMINT



PMS 322C

JADE



PMS 811C

ELECTRIC ORANGE



PMS 368C

ALIEN GREEN



PMS 367C

LIME GREEN



PMS 358C

APPLE GREEN



PMS 453C

DESERT SAND



PMS 7499C

VANILLA MILKSHAKE



PMS 120C

SHERBET LEMON



PMS 108C

SUN YELLOW



PMS 1235C

GOLD



PMS 1585C

ORANGE CRUSH



PMS 173C

BURNT ORANGE



PMS 200C

FIRE RED



PMS 208C

CRANBERRY



PMS 214C

HOT PINK



PMS 1925C

LIPSTICK PINK



PMS 204C

CANDYFLOSS PINK



PMS 1895C

BABY PINK



PMS 674C

PINKY PURPLE



PMS 485C

SUNSET RED



PMS 201C

RED HOT CHILLI



PMS 229C

BURGUNDY



PMS 492C

BRICK RED



PMS 2622C

PLUM



PMS 259C

MAGENTA MAGIC



PMS 412C

HOT CHOCOLATE



PMS 419C

JET BLACK



PMS 425C

STORM GREY



COOL GREY 11C

CHARCOAL



PMS 424C

STEEL GREY



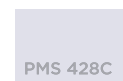
PMS 429C

HEATHER GREY



PMS 7541C

ASH



PMS 428C

MOONDUST GREY



WHITE

ARCTIC WHITE



PMS 419C

SUPA BLACK



PMS 216C

SUPA BURGUNDY



PMS 429C

SUPA GREY



PMS 2766C

SUPA NAVY



PMS 661C

SUPA ROYAL



PMS 269C

SUPA PURPLE



PMS 485C

SUPA RED



PMS 226C

SUPA HOT PINK



PMS 445C

SUPA CHARCOAL



PMS 426C

BLACK HEATHER



PMS 10C

GREY HEATHER



PMS 7546C

NAVY HEATHER



PMS 668C

PURPLE HEATHER



PMS 653C

ROYAL HEATHER



PMS 186C

RED HEATHER



PMS 205C

PINK HEATHER

## JH003 VARSITY HOODIE

## NEW COLOURS



## JH003J KIDS VARSITY HOODIE

## NEW COLOUR



## JH009 BASEBALL HOODIE

## NEW STYLE



## JH033 BASEBALL SWEAT

## NEW STYLE



## JH043 VARSITY JACKET / JH043J KIDS VARSITY JACKET



## JH044 ELECTRIC VARSITY JACKET

## JH048 UNDERGRAD JACKET

## NEW STYLE



## JH053 VARSITY ZOODIE



### PLEASE NOTE:

COLOUR REPRESENTATION IS ONLY AS ACCURATE AS THE PRINTING PROCESSES WILL ALLOW.







**CHARCOAL**  
JET BLACK



**ARCTIC WHITE**  
FRENCH NAVY



**HOT CHOCOLATE**  
VANILLA MILKSHAKE



**JET BLACK**  
GOLD



**JET BLACK**  
HEATHER GREY



**LIME GREEN**  
MAGENTA MAGIC



**JET BLACK**  
HOT PINK



**SAPPHIRE BLUE**  
LIME GREEN



**PURPLE**  
SUN YELLOW



**SAPPHIRE BLUE**  
HEATHER GREY



**NEW FRENCH NAVY**  
SKY BLUE



**KELLY GREEN**  
ARCTIC WHITE



**HEATHER GREY**  
FIRE RED



**ARCTIC WHITE**  
HOT PINK



**CANDYFLOSS PINK**  
HOT PINK



**OXFORD NAVY**  
HAWAIIAN BLUE



**JET BLACK**  
FIRE RED



**JET BLACK**  
GOLD



**JET BLACK**  
HEATHER GREY



**JET BLACK**  
HOT PINK



**KELLY GREEN**  
ARCTIC WHITE



**SAPPHIRE BLUE**  
HEATHER GREY



**PURPLE**  
SUN YELLOW



**FOREST GREEN**  
GOLD



**NEW**  
**BURGUNDY**  
GOLD

### JH013 SUPERBRIGHT HOODIE



**HEATHER GREY**  
ELECTRIC PINK



**HOT PINK**  
ELECTRIC YELLOW



**FIRE RED**  
ELECTRIC YELLOW



**JET BLACK**  
ELECTRIC GREEN



**KELLY GREEN**  
ELECTRIC ORANGE



**OXFORD NAVY**  
ELECTRIC ORANGE



**PURPLE**  
ELECTRIC GREEN



**SAPPHIRE BLUE**  
ELECTRIC YELLOW

### JH041 COLLEGE JACKET



**HEATHER GREY**



**JET BLACK**



**ROYAL BLUE**



**FIRE RED**



**OXFORD NAVY**



**HOT PINK**  
WHITE



**JET BLACK**  
FIRE RED



**JET BLACK**  
HEATHER GREY



**JET BLACK**  
SUN YELLOW



**OXFORD NAVY**  
BURGUNDY



**PURPLE**  
HEATHER GREY



**SAPPHIRE BLUE**  
HEATHER GREY

### JH051 URBAN VARSITY ZOODIE **NEW STYLE**



**JET BLACK**  
FIRE RED



**OXFORD NAVY**  
HEATHER GREY



**HEATHER GREY**  
JET BLACK

### JH053J KIDS VARSITY ZOODIE



**NEW FRENCH NAVY**  
HEATHER GREY



**HEATHER GREY**  
FRENCH NAVY



**JET BLACK**  
FIRE RED



**NEW FRENCH NAVY**  
FIRE RED



**PURPLE**  
SUN YELLOW



**SAPPHIRE BLUE**  
HEATHER GREY

### JH059 RETRO ZOODIE



**CHARCOAL GREY**  
BURGUNDY



**CHARCOAL GREY**  
JET BLACK



**CHARCOAL GREY**  
BOTTLE GREEN



**CHARCOAL GREY**  
OXFORD NAVY

contrast  
colour guide



[www.justhoodsbyawdis.com](http://www.justhoodsbyawdis.com)

